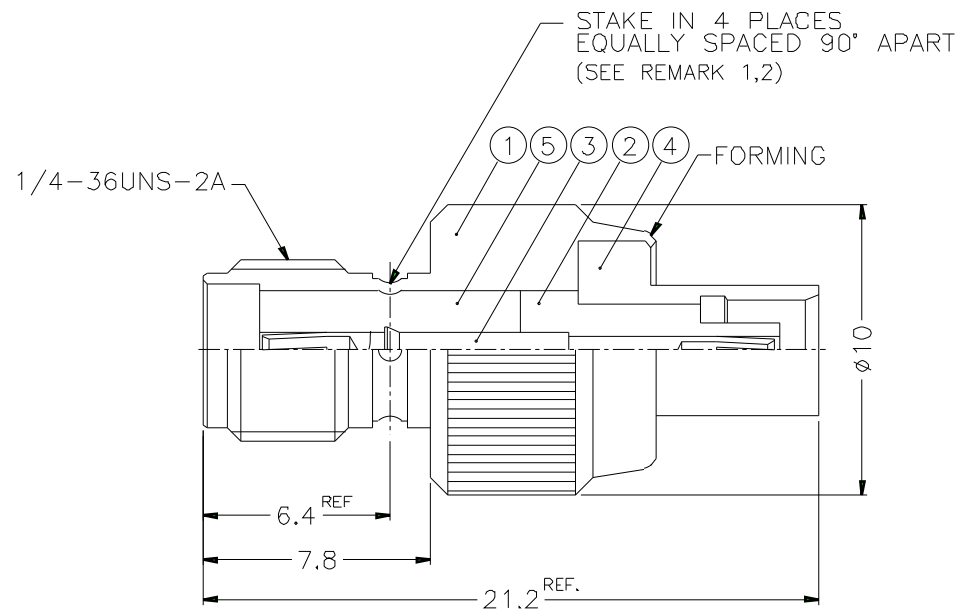


1		2		3		4		5		6		7		8	
REVISIONS															
ISS	ZONE	DESCRIPTION\PER REQUEST\DATE													

REMARK:1. NO.5 MUST WITHSTAND A 6 lbs. MIN. PUSHOUT FORCE FROM NO.1 AFTER STAKING OPERATION
 2. REMARK1 IS MAINTAINED BY STAMPING THE FOUR POINTS SHOWN ON THE DRAWING WITHOUT PUNCTURING NO.1



NOTES: FINISH (PLATING THICKNESS IN MICRO-INCHES)
 1. BRASS PER QQ-B-626
 2. BERYLLIUM COPPER PER QQ-C-530
 3. GOLD PL. 3 MIN. THICK OVER NICKEL PL. 100 MIN. THICK OVER COPPER STRIKE
 4. GOLD PL. 50 MIN. THICK OVER NICKEL PL. 100 MIN. THICK OVER COPPER STRIKE
 5. TEFLON MIL-P-19468

5	INSULATOR	NOTE 5	NATURAL	1	SMAF-SMBM1-2-C
4	BODY	NOTE 1	NOTE 3	1	SMAM-MCXF1-5-B
3	CONTACT PIN	NOTE 2	NOTE 4	1	SMAF-MCXF1-3-B
2	INSULATOR	NOTE 5	NATURAL	1	SMAF-MCXF1-2-B
1	HOUSING	NOTE 1	NOTE 3	1	SMAF-SMBM1-1
NO.	DESCRIPTION	MATERIAL	FINISH	Q'TY	DRAWING NO.

DIMENSIONS ARE IN MILLIMETERS				PART NO. SMAF-MCXF1-3GT50G-50			
UNLESS OTHERWISE SPECIFIED TOLERANCES 0.5-6 = ±0.2 6-30 = ±0.4 30-120 = ±0.6 120-315 = ±1 315-1000 = ±1.6 1000-2000 = ±2.4				APPROVED		DATE 10-11-01'	
				CHECKED		DATE 10-11-01'	
				DRAWN		DATE 10-11-01'	
				SCALE		FILE NO.	
4/1	ISSUE	A					

Amphenol	
TITLE SMA FEMALE TO MCX FEMALE ADAPTOR	
DRAWING NO. KJ-SMAF-MCXF1-3GT50G-50	
ITEM NO.	

1		2		3		4		5		6		7		8	
---	--	---	--	---	--	---	--	---	--	---	--	---	--	---	--