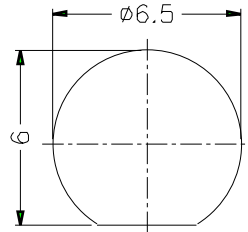
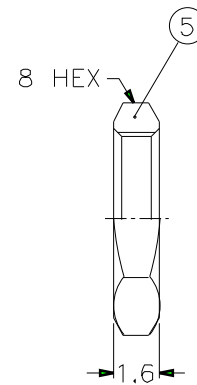
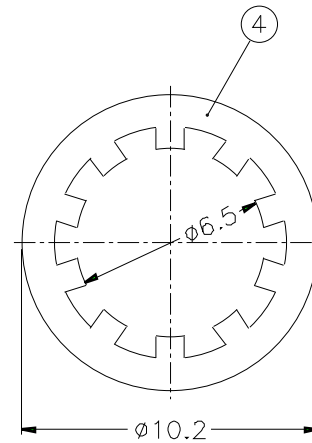
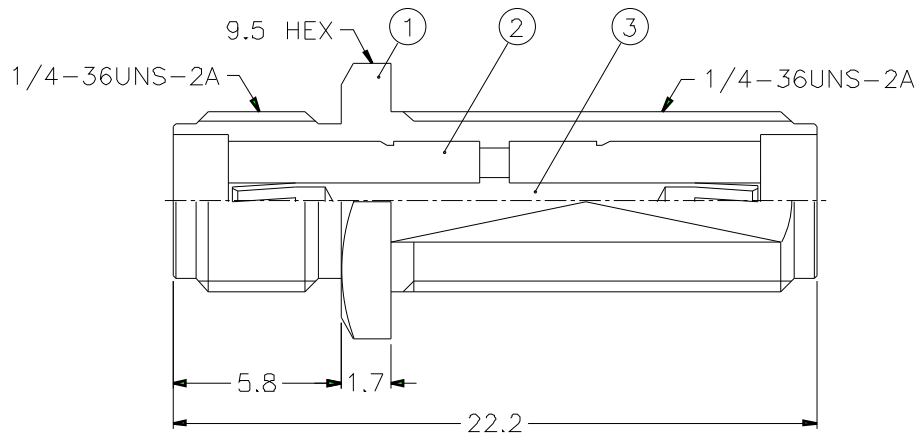


1		2		3		4		5		6		7		8	
REVISIONS															
ISS	ZONE	DESCRIPTION\PER REQUEST\DATE													



RECOMMENDED MOUNTING HOLE



NOTES: FINISH (PLATING THICKNESS IN MICRO-INCHES)

1. BRASS PER QQ-B-626
2. BRASS PER QQ-B-613
3. NICKEL PL. 100 MIN. THICK OVER COPPER STRIKE
4. BERYLLIUM COPPER PER QQ-C-530
5. GOLD PL. 50 MIN. THICK OVER NICKEL PL. 100 MIN. THICK OVER COPPER STRIKE
6. TEFLON MIL-P-19468
7. STAINLESS STEEL PER QQ-S-764, TYPE 303
8. PASSIVATED PER QQ-P-35

1. MAX. PANEL THICKNESS=6.4mm

DIMENSIONS ARE IN MILLIMETERS										PART NO. SMA7471B1-S/PT50G-50		Amphenol			
UNLESS OTHERWISE SPECIFIED TOLERANCES										APPROVED	DATE				
5	HEX NUT	NOTE 1	NOTE 3	1	HNB-1/4-36X16	0.5-6 = ±0.2						10-11-01'			
4	LOCK WASHER	NOTE 2	NOTE 3	1	LW-102/65X05	6-30 = ±0.4					CHECKED	DATE			
3	CONTACT PIN	NOTE 4	NOTE 5	1	SMA7910-3	30-120 = ±0.6						10-11-01'	DRAWING NO.		
2	INSULATOR	NOTE 6	NATURAL	2	SMA7471B1-2T-50	120-315 = ±1						10-11-01'	KJ-SMA7471B1-S/PT50G-50		
1	BODY	NOTE 7	NOTE 8	1	SMA7471B1-1-B	315-1000 = ±1.6						10-11-01'	ITEM NO.		
						1000-2000 = ±2.4									
NO.	DESCRIPTION	MATERIAL	FINISH	Q'TY	DRAWING NO.	SCALE	4/1	ISSUE	A	FILE NO.					

1		2		3		4		5		6		7		8	
---	--	---	--	---	--	---	--	---	--	---	--	---	--	---	--