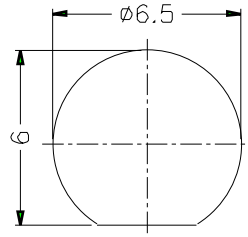
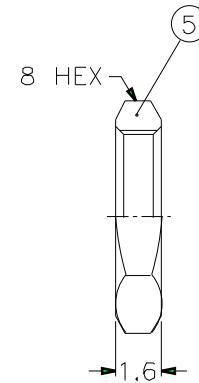
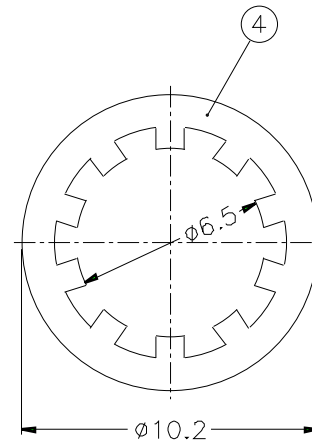
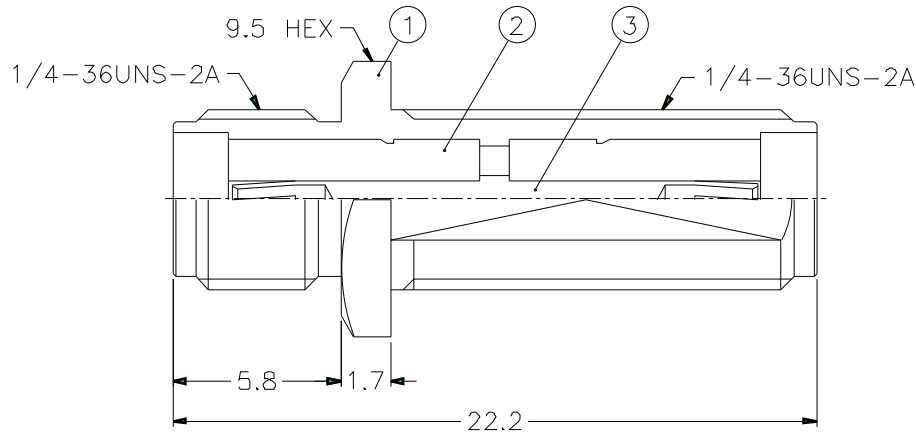


1		2		3		4		5		6		7		8	
REVISIONS															
ISS	ZONE	DESCRIPTION\PER REQUEST\DATE													



RECOMMENDED MOUNTING HOLE



NOTES: FINISH (PLATING THICKNESS IN MICRO-INCHES)

1. BRASS PER QQ-B-626
2. BRASS PER QQ-B-613
3. GOLD PL. 3 MIN. THICK OVER NICKEL PL. 100 MIN. THICK OVER COPPER STRIKE
4. BERYLLIUM COPPER PER QQ-C-530
5. GOLD PL. 50 MIN. THICK OVER NICKEL PL. 100 MIN. THICK OVER COPPER STRIKE
6. TEFLON MIL-P-19468

1. MAX. PANEL THICKNESS=6.4mm

						DIMENSIONS ARE IN MILLIMETERS				PART NO. SMA7471B1-3GT50G-50		<h1>Amphenol</h1>			
						UNLESS OTHERWISE SPECIFIED TOLERANCES				APPROVED					
						0.5-6 = ±0.2						10-11-01'			
						6-30 = ±0.4				CHECKED		DATE			
						30-120 = ±0.6						10-11-01'			
						120-315 = ±1				DRAWN		DATE			
						315-1000 = ±1.6						10-11-01'			
						1000-2000 = ±2.4									
						SCALE 4/1 ISSUE A				FILE NO.		DRAWING NO. KJ-SMA7471B1-3GT50G-50			
												ITEM NO.			

5	HEX NUT	NOTE 1	NOTE 3	1	HNB-1/4-36X16
4	LOCK WASHER	NOTE 2	NOTE 3	1	LW-102/65X05
3	CONTACT PIN	NOTE 4	NOTE 5	1	SMA7910-3
2	INSULATOR	NOTE 6	NATURAL	2	SMA7471B1-2T-50
1	BODY	NOTE 1	NOTE 3	1	SMA7471B1-1-B
NO.	DESCRIPTION	MATERIAL	FINISH	Q'TY	DRAWING NO.